



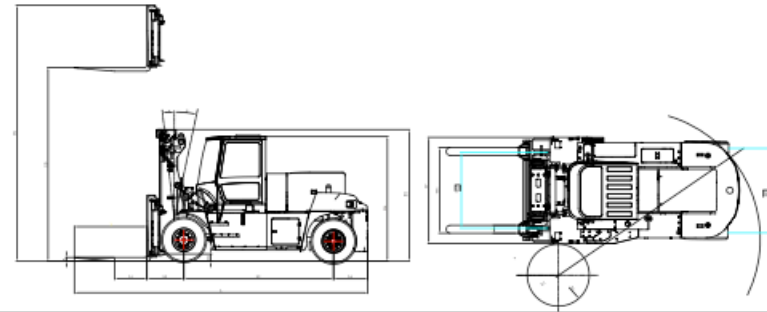
Introducing the new Greenpower Heavy-Duty Lithium Forklift, engineered for unmatched performance, safety, and efficiency in demanding environments.

With lifting capacities from 14 to 18 tonnes, it is ideal for ports, stations, docks, warehouses, and construction sites handling oversized or overweight loads. Featuring fast lithium charging, long battery endurance, and compatibility with double-gun charging, it keeps operations running smoothly.

Advanced safety systems include real-time monitoring, radar-assisted visibility, fire protection, and intelligent temperature control, ensuring reliability in all weather conditions.

With over 60 years of Heli technical expertise, this forklift delivers robust design, operator comfort, and eco-friendly power for modern heavy-duty logistics.

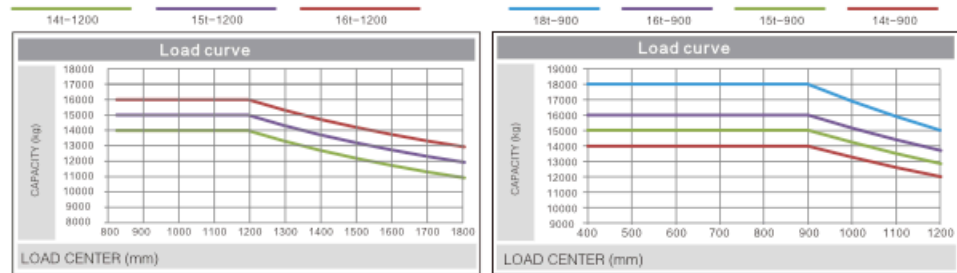
TECHNICAL PARAMETERS						
Characteristic						
1.1	Rated capacity	kg	CPD140	CPD150	CPD160	CPD180
1.2	Load center distance	L1	14000	15000	16000	18000
1.3	Power mode	/	Electric			
1.4	Driving mode	/	Ride-on			
1.5	Lifting height(standard)	H3	3000			
1.6	Mast tilt angle (forward/backward)	α/β	6/12			
1.7	Wheel base	L2	3750			
1.8	Tread(forward/backward)	W1/W2	1895/2120			
1.9	Overhang(forward/backward)	L3/L4	935/850		1010/850	
1.10	Overall width	W	2660			
1.11	Overall length(without fork)	L	5535			5610
1.12	Overall height(cab/mast/max.height,extended)	H4/H/H1	3200/3340/4840		3340/3385/4885	
1.13	Min.ground clearance (mast)	H2	290			
1.14	Max.grade ability,laden/unladen	%	18/25		15/25	
1.15	Min.turning radius	R2	5100			
1.16	Fork size	mm	1820X200X95			
1.17	Fork adjustment range (outside of fork)	mm	610-2150			
1.18	Max.travel speed (laden/unladen)	km/h	27/28		24/26	
1.19	Max.lift speed (laden/unladen)	mm/s	400/430		380/400	
1.20	Max.drawbarpull(laden)	KN	83			
1.21	Total weight	kg	21000	21500	22000	23500
1.22	Noise next to the driver's ear	dB(A)	75			
1.23	Tyre size(front/rear)		12.00-20-20PR/12.00-20-20PR		12.00-24-20PR/12.00-20-20PR	
1.24	Motor	Driving motor	kW			135
1.25		Pump motor	kW			90
1.26		Type	Lithium Iron Phosphate			
1.27	Lithium Battery	Rated Voltage (Standard/Optional)	V			618/608
1.28		Battery Capacity (Standard/Optional)	kwh			186/210



Wide-field View Basic Mast							
Mast type	Maximum lifting height (mm)	Load capacity (load center 900/1200mm) (kg)			The mast is on the ground Overall Height(mm)	Largest mast Height (mm)	Tilt angle (front/rear) (α/β) (°)
		CPD140	CPD150	CPD160			
M300	3000	14000	15000	16000	3340	4840	6/12
M350	3500	14000	15000	16000	3590	5340	6/12
M400	4000	14000	15000	16000	3840	5840	6/12
M450	4500	14000	15000	16000	4090	6340	6/12
M500	5000	14000	15000	16000	4340	6840	6/6
M550	5500	13000	14000	15000	4590	7340	3/6
M600	6000	12000	13000	14000	4840	7840	3/6
M650	6500	11000	12000	13000	5090	8340	3/6

TECHNICAL PARAMETERS						
Characteristic						
1.1	Rated capacity	kg	CPD140	CPD150	CPD160	
1.2	Load center distance	L1	14000	15000	16000	
1.3	Power mode	/	Electric			
1.4	Driving mode	/	Ride-on			
1.5	Lifting height(standard)	H3	3000			
1.6	Mast tilt angle (forward/backward)	α/β	6/12			
1.7	Wheel base	L2	3750			
1.8	Tread(forward/backward)	W1/W2	1895/2120			
1.9	Overhang(forward/backward)	L3/L4	935/850			
1.10	Overall width	W	2660			
1.11	Overall length(without fork)	L	5535			
1.12	Overall height(cab/mast/max.height,extended)	H4/H/H1	3200/3340/4840			
1.13	Min.ground clearance (mast)	H2	290			
1.14	Max.grade ability,laden/unladen	%	18/25			
1.15	Min.turning radius	R2	5100			
1.16	Fork size	mm	2440X200X100			
1.17	Fork adjustment range (outside of fork)	mm	610-2150			
1.18	Max.travel speed (laden/unladen)	km/h	27/28			
1.19	Max.lift speed (laden/unladen)	mm/s	400/430			
1.20	Max.drawbarpull(laden)	KN	83			
1.21	Total weight	kg	22000	22700	23500	
1.22	Noise next to the driver's ear	dB(A)	75			
1.23	Tyre size(front/rear)		12.00-20-20PR/12.00-20-20PR			
1.24	Motor	Driving motor	kW			135
1.25		Pump motor	kW			90
1.26		Type	Lithium Iron Phosphate			
1.27	Lithium Battery	Rated Voltage (Standard/Optional)	V			618/608
1.28		Battery Capacity (Standard/Optional)	kwh			186/210

Wide-field View Basic Mast						
Mast type	Maximum lifting height (mm)	Load capacity (load center 900mm) (kg)	The mast is on the ground Overall Height(mm)	Largest mast Height (mm)	Tilt angle (front/rear) (α/β) (°)	
		CPD180				
M300	3000	18000	3385	4885	6/12	
M350	3500	18000	3635	5385	6/12	
M400	4000	18000	3885	5885	6/12	
M450	4500	18000	4135	6385	6/12	
M500	5000	18000	4385	6885	6/6	
M550	5500	17000	4635	7385	3/6	
M600	6000	16000	4885	7885	3/6	
M650	6500	15000	5135	8385	3/6	



Note:

Load center is measured from the fork front. A standard load center point refers to the center of a cubic of side length of 2400mm. When gantry tilts forward, the bearing capacity will reduce in case of use of non-standard fork or loading a load exceeding the normal width. Load curve tells you bearing capacity of various load centers in time.



LinkedIn



YouTube

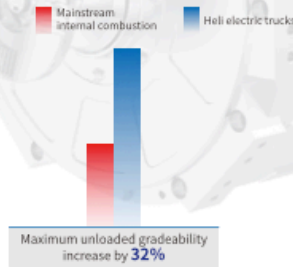
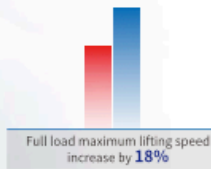
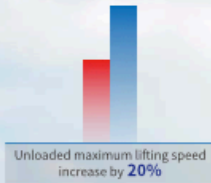


Facebook

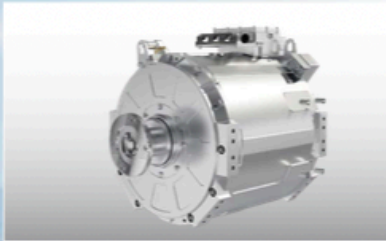
STRONG PERFORMANCE

UP TO 32% BETTER PERFORMANCE THAN TRADITIONAL INTERNAL COMBUSTION TRUCKS

- The performance is equal to or even better than the mainstream internal combustion heavy truck, and the work efficiency is high.

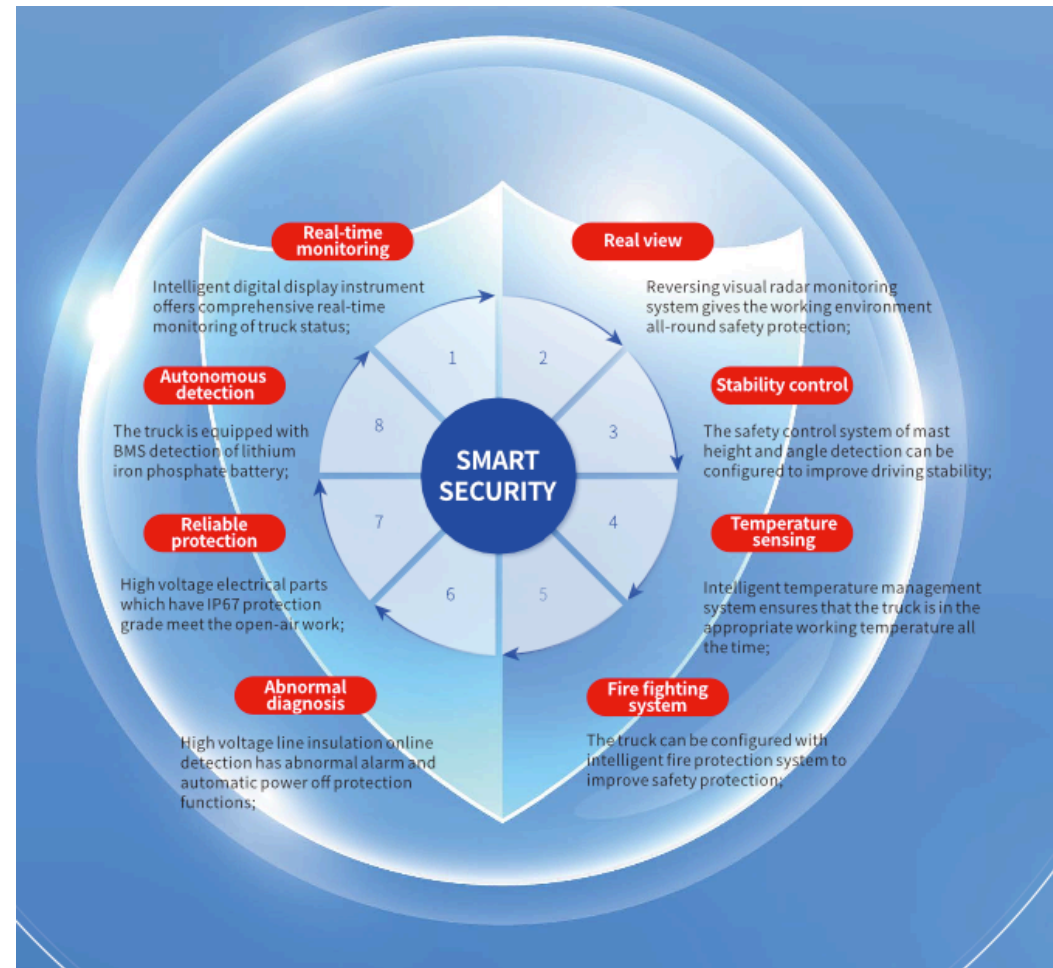


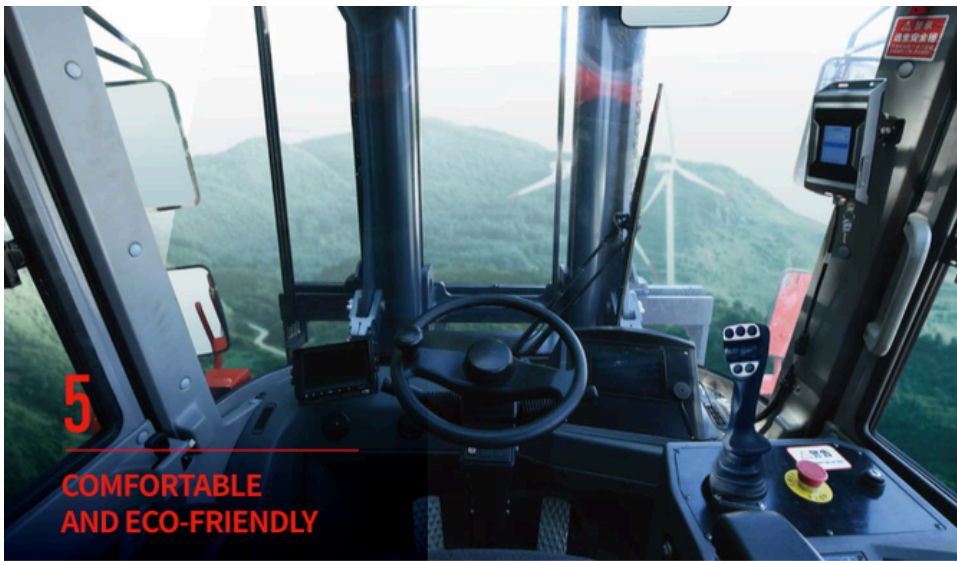
- The permanent magnet synchronous motor has the advantages of high working efficiency, fast response speed, low failure rate and good energy saving effect.
- The motor and electric control are cooled by water cooling to ensure its superior working condition.



- The truck is equipped with heavy truck special high-speed drive axle and wet brake which offer the features of dust proof, water proof and maintenance-free; Excellent braking performance meets the requirements of long time heavy working conditions; High axle housing strength ensures improved transfer efficiency and reliable performance;

- The hydraulic system has potential energy recovery function; The hydraulic system has excellent performance, good handling performance, high accuracy, and the truck is stable and reliable.





5 COMFORTABLE AND ECO-FRIENDLY

A RELAXED DRIVING EXPERIENCE FOR CUSTOMERS

- Vibration reduction: the use of full suspension knitted surface seat greatly improves the ride comfort.
- Noise reduction: fully closed electric tilting cab reduces the noise transmission of the whole machine.
- Wide vision mast offers good operating vision; Standard rear working light makes work easy at night.
- Rich instrument display content and human-computer interaction interface achieves timely acquisition of truck status, ensuring safe driving, stable operation.
- Full hydraulic power steering make operation light and flexible.
- Standard configuration of heating and cooling dual high-pressure electric split air conditioning offers high air conditioning energy utilization. The air duct is the front and the lower part, giving the driver a comfortable operating environment.
- The action of the mast is controlled by the thumb switch, which makes the operation more light.



- Low noise when the truck runs reduces noise pollution.
- Pure electric operation achieve "zero emissions".

Options sheet

Model number	Standard configuration	Optional configuration
Safety class	Rotating warning light	Battery built-in fire extinguishing system (Changes in warranty treaties)
	Turn signal light	Centralized fire fighting system
	Reverse buzzer	-
	Visual reverse radar	-
	Identification module meeting TSG 81	-
	Tilt oil circuit self-locking valve	-
Mast / attachments	Lift oil circuit self-locking valve	-
	3m mast	-
	Side shift fork positioner	-
	-	Whole vehicle lifting spreader
Comfort Class	-	Full free mast
	Grammer full suspension seats	boom
	Full hydraulic power steering	Fork arm extension
	USB charging port	-
	Radio	-
Tires	Air conditioning for heating and cooling	-
	Patterned durable pneumatic tires	Full solid tires
	-	Front solid tires / inflatable rear tires
Else	-	Inflatable front tires / rear solid tires
	Patterned durable pneumatic tires	Centralized lubrication system
	Electric tilting cab	Weighing system
	Truck accompanying tools	-
	Truck networking terminal	-
	Double gun charging port	-
	Fixed/variable hydraulic system	-
Hydraulic circuit oil filter	-	
Wet brake	-	

Attachments options



- **Side shift forks (standard)**
It has the functions of fork positioners and side shift to improve the working efficiency



- **Fork arm extension**
Effective extension of fork, suitable for larger shape cargo handling



- **Boom**
Suitable for goods in coils of steel, wire, etc



- **Arm**
Lifting cargo safely and efficiently



- **Pipe and wire spreader**
Suitable for the lifting of bundles of steel bars, steel pipes and other goods



ANHUI HELI CO., LTD.

Add / No.668, FangXing Road, Hefei, China

Fax / +86-551-63639966

Tel / +86-551-63639068(America); 63639258(Europe);
63639358(Asia); 63662105(Africa & Middle East)

* Our products are subject to improvements and changes without notice.